



Type in Adobe Creative Suite 2

How Creative Suite applications work with fonts

Type: you work with it every day, in almost every *document*. You count on fonts, small pieces of software, to perform reliably in different applications, on different platforms, and with various types of output. Your customers choose fonts based on design needs, as a way of expressing themselves and getting their messages across. It's your job to ensure they print. Understanding different font formats, how Adobe® Creative Suite 2 interacts with fonts, and how to avoid pitfalls can help you print customer files smoothly and efficiently.

to transfer a document from one computer to another.

Adobe Systems worked with Microsoft to develop the cross-platform OpenType font format, which is based on existing Type 1 and TrueType technology. Adobe applications support both kinds of OpenType fonts: those containing PostScript® data, such as OpenType fonts developed by Adobe (with the suffix .otf), and those based on TrueType fonts (with a .ttf or .otf suffix). Although OpenType fonts can have either of two different outline formats, everything else about the font file is the same, making it easier for application and system vendors to support the advanced language and typographic capabilities of OpenType fonts. Adobe has converted its entire font library to OpenType fonts, and several other vendors now provide their libraries in OpenType format, as well.

A single file contains the outline and metrics data for each OpenType font, simplifying file management. The same font file works on

IN THIS ISSUE

Type in Adobe Creative Suite 2 1

Technical Solutions

Adobe Creative Suite..... 5

Illustrator..... 5

InDesign 5

PageMaker 7

Photoshop 8

Resources

Adobe PDF Library from Datalogics .. 9

Adobe Creative Suite 2 applications support OpenType, Type 1, and TrueType fonts in Windows and Mac OS X. Adobe InDesign® CS2, Adobe Photoshop® CS2, and Adobe Illustrator® CS2 provide strong support for OpenType fonts, in particular, and better integration of type between the applications, especially in PDF workflows.

WORKING WITH OPENTYPE FONTS

OpenType fonts offer several advantages over traditional Type 1 and TrueType fonts. They are cross-platform, support alternate glyphs for advanced typography, can include characters for more languages in a single font, and are compatible with most applications and with all recent operating systems. Not all OpenType fonts support the same features, but they all make it easier

Continued on page 2



Continued from page 1

both Macintosh and Windows computers, making documents much more portable. And OpenType fonts don't require special handling; they can be installed and used alongside PostScript Type 1 and TrueType fonts. They're natively supported in the latest operating systems—Mac OS X, Windows 2000, and Windows XP; they are also supported in older Mac OS and Windows operating systems with ATM® Light™.

Previously, a typical Western PostScript font was limited to 256 glyphs, which are the specific forms that characters can take. Therefore, you needed an extra font to access the standard “expert set” glyphs that didn't fit in the main font file. And if there were more special alternates (swash caps or special ligatures, for example), those would need further separate fonts. In an OpenType font, all related glyphs are in a single font file. A single OpenType font can include more than 65,000 glyphs, so there's plenty of room for nonstandard glyphs such as old-style figures, true small capitals, fractions, and a full range of ligatures. The OpenType text model means that no matter what alternate glyphs you use, you can check spelling and use find and change features as if you were using the standard glyph set.

You use special OpenType formatting to access alternate glyphs or positioning in applications that support these features, such as InDesign, Illustrator and Photoshop. Each character has a default glyph and position. When you apply a layout feature to one or more characters, the positioning of glyphs may change, or a different glyph may be substituted. For example, if you apply the small capitals feature to a lowercase “a,” the small capital “a” glyph is substituted. Applications that don't support advanced OpenType layout features can still access the basic glyph sets, which are analogous to those in traditional PostScript Type 1 fonts.

OpenType fonts are based on Unicode, an international multi-byte character encoding that covers virtually all of the world's languages. These fonts can include multiple language character sets in one font, making multilingual typography easier.

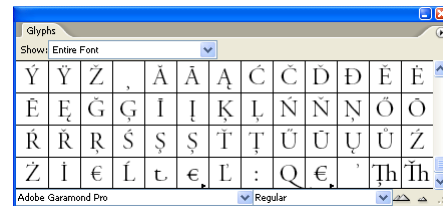
Note: OpenType ordinal and fraction features should not be applied globally to text, but only to the actual ordinals and fractions. Newer fonts that have “arbitrary fractions” capability may superscript stand-alone numbers if you format all the text as fractions. This is especially a problem with font versioning, if a newer version of a font has been revised to support arbitrary fractions. For more information, see Adobe's OpenType User Guide and OpenType Read Me file at <http://store.adobe.com/type/browser/pdfs/OTGuide.pdf>

As with PostScript Type 1 or TrueType fonts, Adobe recommends you obtain copies of your customer's OpenType fonts when they submit jobs to prevent discrepancies in versions of the font. However, it is still your responsibility as a service provider to own a license in order to legally install and use the font. For information, see <http://www.adobe.com/type/topics/licenseqa.html>.

Understanding OpenType font names

All OpenType fonts from Adobe include the standard range of Latin characters used throughout western countries, as well as several international characters, including the euro currency and litre symbols. Western OpenType fonts named “Pro” add a full range of accented characters to support central European languages, such as Turkish and Polish. Many also contain Cyrillic and Greek character extensions.

To see which features a font includes, visit <http://store.adobe.com/type/main.html> and browse fonts; cyan icons indicate which features are included. Alternatively, in InDesign or Illustrator, use the Glyph palette menu to see which features are in a font; select those features to see which glyphs are used for them. The OpenType User Guide clearly spells out which OpenType layout features are supported by which Adobe applications.



In the Adobe store (<http://store.adobe.com/type/main.html>), you can see which alternative glyphs are included with a font. Click the More Info tab to see a detailed list of linguistic character sets supported, as well as a link to a PDF file showing all the glyphs in the font, sorted by category.

Continued on page 3

The Adobe Solutions Network (ASN) manages programs to educate and prepare businesses that support users of Adobe products. If you are a Print Service Provider, Trainer, Developer, System Integrator, or Value-Added Reseller, and would like to learn more about the ASN, please visit <http://partners.adobe.com> for details.

Past Issues of ReadMe Now: You can download past issues of this newsletter from a special ASN area on Adobe's Web site: <http://partners.adobe.com/asn/service/private/techbenefits.jsp>

ASN Customer Services E-mail: asnprovider@adobe.com

Resources for service providers: <http://www.adobe.com/asnprint>

ReadMe Now is produced with Adobe® InDesign® and Adobe® Acrobat®.

Adobe, the Adobe logo, Acrobat, Adobe Premiere, Adobe Type Manager, ATM, Distiller, Exchange, GoLive, FrameMaker, InDesign, Illustrator, PageMaker, Photoshop, PostScript, and Version Cue are trademarks of Adobe Systems Incorporated. Apple Macintosh, and Power Macintosh are trademarks of Apple Computer, Inc., registered in the U.S. and other countries. Microsoft and Windows are either registered trademarks or trademarks of Microsoft Corporation. All other trademarks are the property of their respective owners.

© 2005 Adobe Systems Incorporated. All rights reserved.

Continued from page 2

In Mac OS X 10.2.5 and earlier, large OpenType fonts might cause a print job to fail; Mac OS X 10.2.6 resolves this issue. In general, however, OpenType fonts present no special challenges for printing or for creating Adobe PDF files. Once OpenType fonts are part of the PostScript print stream or are in a PDF file, they appear no different to PostScript RIPS than Type 1 or TrueType fonts.

For detailed information about OpenType fonts, visit <http://www.adobe.com/type/opentype>.

WORKING WITH TYPE 1 FONTS

For many years, PostScript Type 1 fonts proved reliable and convenient for printers. However, the format has its limitations. A single Type 1 font can include only 256 glyphs, and it doesn't use a Unicode encoding. The Type 1 font format doesn't provide typographic extensions for languages that require them. The font files aren't designed to be cross-platform, and each font requires multiple files. For all of these reasons, Adobe has moved its type library from Type 1 fonts to OpenType fonts.

Adobe stopped developing new Type 1 fonts in 1999, but Adobe Creative Suite 2 continues to support them. Likewise, the Multiple Master Type 1 fonts are no longer available, but still work in current Adobe applications. Unless there is a very specific reason for choosing Type 1 fonts, Adobe recommends licensing OpenType fonts as the best long-term investment.

Though Windows Type 1 fonts are not supported by the Mac OS X operating system, you can use the fonts with Creative Suite applications in Mac OS X. To use them with the applications, copy the files to the application's font folder or the Adobe common font folder.

WORKING WITH TRUETYPE FONTS

TrueType fonts have long been the alternative to Type 1 fonts. The system fonts that come with Windows XP and Mac OS X are TrueType fonts. Though they also have limitations, TrueType fonts are supported in Adobe Creative Suite 2 applications.

Though you can't use Macintosh TrueType fonts on Windows, you can use Windows TrueType fonts in Mac OS X. To use them in Mac OS X, place the Windows TrueType fonts in one of the standard font locations, or activate them in Suitcase or Font Reserve.

WORKING WITH FONTS IN ADOBE CREATIVE SUITE 2

Typography is a priority for Adobe, so the Adobe Creative Suite 2 applications provide strong support for OpenType, Type 1 and TrueType fonts, extended typography support, and consistent font usage throughout the workflow. More than 180 OpenType fonts are

SYSTEM FONTS IN MAC OS X

In Mac OS X, some of the system fonts, which are stored in special packaging that will work on a Unix File System (UFS), are called dFonts (data fork fonts). Unlike the TrueType fonts in earlier Mac OS versions, dFonts contain all the font information; there is no additional resource fork. While these are high-quality fonts, they are not recommended for workflows where users might want to open the document on a Mac OS system earlier than Mac OS X. If a customer provides you with a file created in Mac OS X using dFonts, output the file from a Mac OS X system where the fonts are installed and activated.

PostScript Type 1 fonts may have different font metrics than their identically named dFont counterparts, so if you try to substitute them for the dFonts, text may reflow. You may want to remove those dFonts that conflict with existing PostScript or TrueType fonts, such as Helvetica, GillSans, and ZapfDingbats. However, the fonts that are stored in the System/Library/Fonts folder, which is a locked system location, require special treatment.

Mac OS X comes with the following dFonts installed in the /System/Library/Fonts folder: Apple LiGothic Medium, AppleGothic, Courier, Geneva, Hei, Helvetica, Keyboard, LastResort, LucidaGrande, Monaco, Osaka, OsakaMono, Symbol, Times, and ZapfDingbats. Additionally, these fonts are installed in the /Library/Fonts folder: #Gungseouche, #HeadlineA, #Pcmyoungjo, #Pilgiche, AmericanTypewriter, Apple LiSung Light, AppleMyungjo, Baskerville, Beijing, BiauKai, BigCaslon, CharcoalCY, Cochin, Copperplate, Didot, Fang Song, Futura, GenevaCY, GillSans, HelveticaCY, HelveticaNeue, Herculanum, Kai, MarkerFelt, MonacoCY, Optima, Papyrus, Seoul, Song, Taipei, TimesCY, Zapfino.

bundled with Adobe Creative Suite 2. (To see which fonts are included, visit <http://www.adobe.com/products/creativesuite/type.html#>.)

Photoshop CS2 and Illustrator CS2 have the same text engine, so you can produce quality vector type in Photoshop.

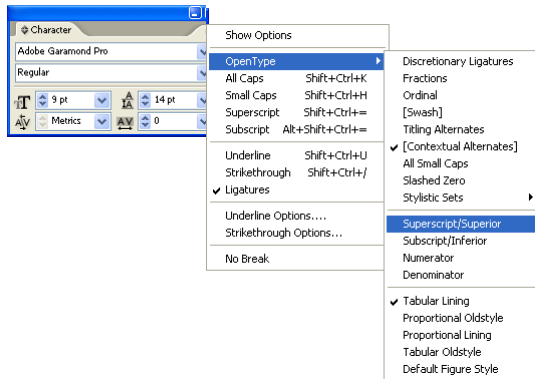
Adobe Creative Suite 2 applications provide better font support for PDF workflows. When you exported Adobe PDF documents from earlier versions of InDesign, fonts were embedded as CID-keyed (Character ID) Type 1 or TrueType fonts, but some non Adobe "PostScript compatible" RIPs had problems processing CID-encoded fonts correctly. Neither InDesign CS2 nor Illustrator CS2 convert fonts to CID-encoded fonts when exporting to PDF unless special OpenType

Continued from page 3

typographic features are involved that require CID encoding. Additionally, Adobe fonts allow embedding, so they can be fully compliant with PDF/X workflows.

To preserve font styles when you import a document, InDesign has extended its Microsoft Word import options.

InDesign CS2, Illustrator CS2, and Photoshop CS2 all provide OpenType layout feature support. You can turn on OpenType layout features that automatically substitute alternate glyphs in an OpenType font, such as automatic ligatures, small capitals, and proportional oldstyle figures.



Certain layout features have some effect on all fonts, whether they are OpenType or not: ligatures, all capitals, and small capitals; those features are on the main InDesign Character palette menu. However, most OpenType layout features are available either through the OpenType submenu of the Character palette menu (InDesign CS2) or from the OpenType palette (Illustrator CS2).

Note: Selecting Superscript or Subscript from the Character palette menu creates these glyphs by scaling full-size numbers, even if the selected font contains designed superscript or subscript glyphs. To use the designed glyphs for your font, use the Superscript/Superior or Subscript/Inferior options on the OpenType submenu or palette. If the OpenType superscript/subscript feature has no effect, or only affects some of the characters, the font does not support OpenType superscript/subscript for the particular characters in question, and you should use the generic version of the feature from the Character palette.

To apply OpenType layout features in InDesign or Photoshop:

1. Click an insertion point to create new text, or select existing text.
2. Select an OpenType font.

3. Select formatting options from the Character palette menu or, in InDesign, its OpenType submenu. A check mark appears next to a feature when it's enabled. A dash next to a feature means that you have selected a block of text that has the feature applied to some of the text. If a feature appears in brackets, the selected fonts does not support that feature.

To apply OpenType layout features in Illustrator CS2:

1. Click an insertion point to create new text, or select existing text.
2. Select an OpenType font.
3. Select formatting items from the Character palette menu or the OpenType palette.

In the Character palette menu, a check mark indicates that a feature is enabled. In the palette, the selection boxes show the current state of the figure type and position. Features that have icons and are turned on are highlighted in the palette; icons cannot be selected if they are not supported in the selected font.

RESOURCES

For more information about type and typography, in general, Adobe fonts, OpenType fonts, and type in Adobe Creative Suite 2, see the following resources:

“Typbography” - <http://blogs.adobe.com/typbography>

Thomas Phinney, Adobe program manager for fonts and core technologies, writes semi-regularly about the technical, business, historical, and design aspects of type and fonts, especially related to Adobe's type development.

“Advanced Typography with Mac OS X Tiger”

http://images.apple.com/pro/pdf/L311277A_FontTT_v4.pdf

Apple provides detailed information about fonts in Mac OS X Tiger

“OpenType User Guide for Adobe Fonts”

<http://store.adobe.com/type/browser/pdfs/OTGuide.pdf>

This user guide provides information about installing, managing, and working with Adobe OpenType fonts.


Adobe Type Reference Guide, OpenType Edition

<http://store.adobe.com/store/products/master.jhtml?id=catATLBook>


This book, available for purchase, is a 300-page visual reference that displays all Adobe Type Library fonts, as well as providing useful information about the OpenType font format, typographic classifications, and character sets.

Technical Solutions

technical news and known issues for ASN service providers

Information about each of these issues is available in Adobe's online technical support database. The links will take you directly to the "living documents"—information that is kept current by Adobe Technical Support staff. Issues that are platform-specific are preceded by MAC or WIN. You can read about issues that have the Adobe logo  next to them by clicking the URL. To search for information about other issues in the technical support database, visit <http://www.adobe.com/support/main.html>. To find issues that appear in *ReadMe Now*, type RMN or ReadMe Now along with other search criteria (e.g., InDesign) into the search field. For tips on searching the database, visit <http://www.adobe.com/search/searchtips.html>.

Adobe Creative Suite Solutions

 Applications do not display properly on OEM computers (Creative Suite 2 on Windows)

<http://www.adobe.com/support/techdocs/331827.html>

Illustrator® Solutions

Error "Fail to install due to an error" when you install Illustrator CS2 12.0.1 update

<http://www.adobe.com/support/techdocs/332379.html>

Issue

When you install the Illustrator CS2 12.0.1 update, you receive the error message "Fail to install due to an error," and the update does not install.

Details

You moved or renamed an Illustrator CS2 file or files before running the updater. For example, you removed the Read Me file or ran a maintenance utility that removed Illustrator foreign language files.

Solution

Reinstall Illustrator CS2, and then install the updater again.

Background information

The 12.0.1 updater checks for the files that it is replacing before it installs. If the files have been moved or renamed, the update does not install correctly.

Error: "Could not complete the requested operation" when you start Illustrator CS2 (Mac OS)

<http://www.adobe.com/support/techdocs/326194.html>

Issue

When you start Illustrator CS2, Illustrator returns the error message, "Could not complete the requested operation" and Illustrator crashes after you click OK.

Details

You moved the Illustrator application file from the Illustrator Application folder.

Solution

Move the Adobe Illustrator CS2 application file back to the Applications/Adobe Illustrator CS2 folder.

Background information

If the Illustrator application file isn't in the Illustrator application folder, Illustrator will not start. If you want to start Illustrator from a different folder, such as the desktop, you must use an alias for the Illustrator application file.

To make an alias of the Illustrator application file:

1. Open the Illustrator application folder, and select the Illustrator application file.
2. Choose File > Make Alias.

InDesign® Solutions

Adobe InDesign 4.01 and Adobe InCopy CS2 4.0.1 updates available

<http://www.adobe.com/support/downloads/main.html>

Updates are available for InDesign CS2 and InCopy CS2.

For a list of issues resolved by the Adobe InDesign CS2 4.0.1 update, see

http://www.adobe.com/special/indesign/id401update/Adobe_InDesign_CS2_4.0.1_ReadMe.pdf

For a list of issues resolved by the Adobe InCopy 4.0.1 update, see

http://www.adobe.com/special/incopy/ic401_update/Adobe_InCopy_CS2_4.0.1_ReadMe.pdf.

Continued from page 5

Set a spot color to overprint in InDesign (CS2, CS, 2.x)

<http://www.adobe.com/support/techdocs/323659.html>

Some applications allow you to specify an overprint setting for a specific color. InDesign cannot define a spot color to overprint by default (that is, via settings in the Swatches palette or the Ink Manager). However, you can set Fill and Stroke to overprint for selected objects or set text to overprint in the Paragraph Style palette.

By default, InDesign knocks out overlapping colors, except for black, which is set to overprint.

Workarounds

Your design work flow may require a certain color to be set to overprint. For example, you want to print all the text in your publication in a specific color, or you have a reoccurring object that contains this color.

The following are some tips or workarounds for this situation:

1. Create a separate layer for objects that contain your spot color and assign them to black.

Black is set to overprint by default in InDesign. You can set a layer to overprint by assigning it to black, and then assign your spot color to this layer when you export to PDF:

- a. Open the Preferences dialog box:
 - In InDesign CS2, choose Edit > Preferences > Appearance Of Black (Windows) or InDesign > Preferences > Appearance Of Black (Mac OS).
 - In InDesign CS or 2.x, choose Edit > Preferences > General > Print Options (Windows) or InDesign > Preferences > General > Print Options (Mac OS).
- b. Select Overprint [Black] Swatch At 100% (InDesign CS2 or CS) or Overprint Black (InDesign 2.x), and then click OK.
- c. Place the objects you want to overprint on a separate layer and assign them to black.
- d. When you are ready to print separations, hide all other layers and export to PDF.

Note: When you give the PDF files to the printer, indicate which spot color should be assigned to each file.

2. Assign a paragraph style with overprint settings.

To assign a spot color to text and have the text always overprint:

- a. In the Paragraph Style palette, double-click on the desired Paragraph Style.
- b. In the Paragraph Style Options dialog box, select Character Color, and then select your spot color.
- c. Select the Overprint Fill box.

- d. Click OK to apply the paragraph style.

3. Create a composite PDF file in InDesign and use a third-party Acrobat plug-in (for example, ARTS PDF Crackerjack) to apply overprint settings to colors within Adobe Acrobat.

4. Assign overprint settings in your RIP.

Many RIP devices allow you to assign overprint settings to a color for printing. Refer to your RIP documentation for information about overprinting options.

5. Apply overprint settings to an image or object, and then add it to your library.

If you have a reoccurring image that contains the spot color you want to overprint:

- a. Create the image, and then select the object or text that contains the color you want to overprint.
- b. Choose Window > Attributes to open the Attributes palette, and select Overprint Fill and/or Overprint Stroke.
- c. Save your design and add it to one of your libraries. You can then add the image from your library to any document without having to reset the overprint options.

6. Edit a placed file in its original application.

If you place an Illustrator or Photoshop file into your InDesign publication and you want colors to overprint, do the following:

- a. Open the file in its original application and set the overprint options there.
- b. In InDesign, update the link to the file in the Links palette.

For more information about setting overprint options within various applications, consult the application user guides or Help.

Error "file name too long..." when you export InCopy stories (InDesign CS, CS2 on Mac OS X)

<http://www.adobe.com/support/techdocs/332200.html>

Issue

When you export multiple stories to InCopy from InDesign, InDesign returns the error message, "Error - cannot copy the file [file name] . File name too long or invalid character."

Detail

You are exporting files to an AFP server.

Solution 1

Use NFS shares instead of AFP to connect a Mac OS X system to a Windows server.

Solution 2

When you manually export each story, you can name the story without creating a file name that is too long.

Continued on page 7

Continued from page 6

To export a story manually:

1. In InDesign, select a story with either the Selection tool or the Text tool.
2. Choose Edit > InCopy > Export > Selection (InDesign CS2) or Edit > InCopy Stories > Export Selected Stories (InDesign CS).
3. Choose a destination for the story and give it a name. Click the Save button.

Background information

When multiple InCopy stories are exported in InDesign format, part of the story name is added to the file name so that you can differentiate the exported files.

The AFP protocol has a 31-character file name limit. InCopy stories with appended file names typically exceed this limit.

Name of exported EPS file doesn't match document (InDesign CS2)

<http://www.adobe.com/support/techdocs/331721.html>

Issue

When you export files from Adobe InDesign CS2, the EPS file names don't match the document. Section names and page ranges are truncated or ignored.

For example, when you export pages 5-7 of Section 2 of a document from InDesign CS, the resulting files are named Section_2_5.eps, Section_2_6.eps, and Section_2_7.eps. Performing the same task in InDesign CS2 creates files named 21.eps, 22.eps, and 23.eps.

Solution 1

Use Adobe Bridge to rename the files.

1. Start Bridge and navigate to the folder containing the files you want to rename.
2. Select the files, and choose Tools > Batch Rename.
3. Choose the appropriate settings, and then click Rename.

Solution 2

Use a third-party utility to change the name of the EPS files.

Solution 3

Manually rename the EPS files in Windows Explorer or Mac OS X Finder.

Error: "Error in...Line 1:...IO Error" when you start (InDesign CS2 4.0.1 on Mac OS X)

<http://www.adobe.com/support/techdocs/326800.html>

Issue

When you try to start Adobe InDesign CS2 4.0.1, InDesign displays the error message, "Error in. Line 1: IO Error."

Detail

You logged in as a standard user.

Solution

In InDesign CS2, choose Help > Updates and follow the prompts in the Adobe Update Manager to download and install the following updates:

- Adobe Library 1 Update for Bridge Scripts
- Adobe Photoshop Service Update

Background information

Previous versions of the Adobe Library 1 Update for Bridge Scripts and Adobe Photoshop Service Update changed the permissions of the Library/Application Support/Adobe/Startupscripsts directory. The new versions of these updates fix that issue.

Troubleshoot damaged InDesign CS2 documents

<http://www.adobe.com/support/techdocs/331678.html>

Crash, freeze, or unexpected shutdown while you work in InDesign CS2 (Mac OS and Windows)

<http://www.adobe.com/support/techdocs/320210.html>

PageMaker® Solutions

Error "...Bad record index" or graphic link information is missing in PageMaker 7.0.x

<http://www.adobe.com/support/techdocs/330384.html>

Issue

When you choose File > Links in Adobe PageMaker 7.0.x, PageMaker returns the error "Cannot process publication's links. Internal error: Bad record index. 8401:20515," or link information for one or more imported graphics is missing in the Links dialog box.

Details

You performed a diagnostic recompose on the publication. One or more imported graphics is located on a master page.

Solution

Create a backup copy of the publication, and then remove imported graphics from the master pages before performing a diagnostic recompose:

1. Choose File > Save As, rename the publication, and then click Save.
2. Remove all imported graphics located on master pages by deleting them or moving them onto the pasteboard or publication pages.
3. Select the Pointer tool, and then press Shift + Option and choose Type > Hyphenation to perform a diagnostic recompose.
4. Replace the graphics on the master pages.

Background information

When you perform a diagnostic recompose in a PageMaker 7.0.x publication that contains one or more imported graphics on a master

Continued from page 7

page, PageMaker 7.0.x deletes the link information for the master page graphics, causing the error “Cannot process publication’s links. Internal error: Bad record index. 8401:20515” to occur when you choose File > Links, or causing link information for the master page graphics to be missing in the Links dialog box.

Missing link information also prevents the publication’s file size from decreasing as expected when you choose Save As or when you save the publication with the Smaller Save option selected in the Preferences dialog box.

PageMaker 7.x crashes after you install Adobe Creative Suite 2 or Illustrator CS2 (Windows)

<http://www.adobe.com/support/techdocs/332380.html>

Issue

After you install Adobe Creative Suite 2 or Adobe Illustrator CS2, Adobe PageMaker 7.x crashes when you open existing PageMaker files and returns one of the following error messages:

- “Error: Adobe PageMaker has encountered a problem and needs to close.”
- “The instruction at ##### referenced memory at location ##### and the memory could not be read.”

Solution

Delete the Dialog9.fon and Ruler.fon files:

1. Go to Program Files\Adobe\Adobe Illustrator CS2\Support Files\Contents\Windows\System.
2. Delete the following files that appear in the folder:
 - Dialog9.fon
 - Ruler.fon
3. Restart the computer.

Background information

The Dialog9.fon and Ruler.fon files are installed by Adobe Illustrator CS2 and cause a conflict with Adobe PageMaker 7.x. Illustrator CS2 does not require these files, so you can safely remove them without affecting Illustrator CS2.

Photoshop® Solutions

Transfer Photoshop CS actions to Photoshop CS2

<http://www.adobe.com/support/techdocs/332256.html>

Adobe Photoshop doesn’t save individual actions, you can only save actions as part of an action set. To transfer actions from Photoshop CS to Photoshop CS2, put the actions you want to save in their own action set in Photoshop CS, export the action set, then import that action set into Photoshop CS2.

To export actions from Photoshop CS:

1. In the Actions Palette, select the action set you want to export.
2. In the palette menu, choose Save Actions.
3. Specify a destination to save the ATN.atn file. to
4. Click Save.

To import actions into Photoshop CS2:

1. In the Actions Palette palette menu select Load Actions.
2. Navigate to the folder where you saved the exported action set.
3. Select the action (ATN) file.
4. Click Load.

Photoshop CS2 crashes when you start or when you open or save an image (Mac OS X v10.3 and v10.4)

<http://www.adobe.com/support/techdocs/332313.html>

Issue

When you start Adobe Photoshop CS2, or when you open or save an image, the application crashes, freezes, or quits with the error message, “The application Adobe Photoshop has unexpectedly quit.”

Solution 1

Troubleshoot Mac OS. Different factors can cause system errors, including conflicts among device drivers, software, and hardware, and corrupt elements in specific files. Although a system error may occur only when you work with Photoshop, Photoshop may not necessarily be the cause--it may be the only application that uses enough memory or processor cycles to expose the problem. See Related Documents for the Photoshop CS2 system troubleshooting guide.

Solution 2

Reduce the number of applications running while you run Photoshop CS2.

Background information

A number of system-related factors can cause Photoshop to crash, such as bad RAM, a problem with the hard disk, device drivers or other installed software. A problem with the Version Cue file manager within Photoshop, which cannot be disabled, may also cause Photoshop to crash in some circumstances.

Optimize performance of Photoshop (CS2 on Windows)

<http://www.adobe.com/support/techdocs/332271.html>

Optimize performance in Photoshop (CS2 on Mac OS)

<http://www.adobe.com/support/techdocs/332270.html>

Resources

extend and enhance your Adobe applications

There are so many plug-ins, educational products, and other resources available for working with Adobe applications that it can be challenging to find those appropriate to streamline your particular workflow. To assist you, each month we feature resources we think you'll find useful.

Adobe sells third-party plug-ins on its website at <http://www.adobe.com/products/plugins/main.html>.

Adobe provides many training resources on its website at <http://www.adobe.com/misc/training.html>.

Adobe PDF Library

Datalogics

<http://www.datalogics.com/pdflibrary-product.asp>

The Adobe® PDF Library™, available through Datalogics, adds robust PDF creation, manipulation, and display capabilities to software applications. It is a developer's toolkit that enables an application to create Adobe-compliant PDF output directly to a file or output device without the need for distillation or click-and-drag third-party PDF conversion utilities.

The Adobe PDF Library uses the same core PDF technology upon which Adobe® Acrobat® is built. The Adobe PDF Library facilitates complex publishing and document workflows, and is ideal for embedding Adobe PDF capabilities into server applications that require high-performance Adobe PDF processing. Using the Adobe PDF Library, your applications can dynamically generate, manipulate, access, and print Adobe PDF documents in multithreaded server environments.

The Adobe PDF Library is licensed to OEMs, Independent Software Vendors (ISVs), system integrators, and enterprise IT customers and partners. When you purchase the Adobe PDF Library through Datalogics, you automatically get the Datalogics Interface (DLI). This interface allows the application to decrease creation time for complex PDF documents. In addition, it facilitates PDF creation by reducing redundant functions occurring in the Adobe PDF Library.



By purchasing the Adobe PDF Library through Datalogics, your PDF output is guaranteed to be suitable for future versions of Adobe® Reader®.

The Adobe PDF Library is available on the following platforms through Datalogics: Windows, Macintosh OS X, Macintosh on Intel, Sun Solaris (32- & 64-bit), Linux, HP IA32/IA64 (Itanium), HP PA-RISC (32- & 64-bit), IBM AIX, IBM AS/400, IBM MVS (OS/390), IBM USS, SGI IRIX, Tru64 UNIX, Free BSD (UNIX), and zSeries (OS/390)

For more information about purchasing the Adobe PDF Library through Datalogics, please visit www.datalogics.com or call 312.853.8200.